



## The Millennium Suite Walsden Cricket and Bowling Club

The perfect venue whatever the occasion

*Weddings, Parties, Celebration Dinners, Corporate Functions, Seminars,  
Birthdays, Funerals, Meetings, Anniversaries & Christenings.*

- Large dance floor with bar facilities • Seating for 100 (Maximum capacity 150)
- Fully equipped adjoining kitchen • Ample free parking • Disabled access • Fully air conditioned



Hire of the venue starts from only £50 non-members and £30 for members

For more information ring **01706 813179** or email  
**enquiries@walsdencandbc.co.uk**

Full details can be seen at: **www.walsdencandbc.co.uk**

Walsden Cricket & Bowling Club, Scott Street, Walsden, Todmorden, OL14 7SX 

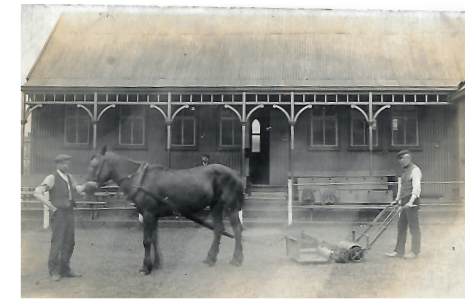
# Walsden Cricket & Bowling Club Pavilion History

*By Allan Stuttard*

In 1910 the committee at Walsden Cricket and Bowling Club made the bold decision to purchase a wooden mission hut from Moorside (Oldham) for £25. They dismantled it and brought it to Walsden by horse and cart at a cost of £7. The rebuilding and decorating brought the total cost up to £194 14s 6p. A princely sum in those days. The opening ceremony raised £8 16s 5p and the club pavilion became the centre of Walsden village life alongside St Peter's church.

Over the years the pavilion was used for many events including meetings, wedding parties, funeral wakes, christening parties, film shows, plays, lectures and elections as well as being used to provide teas for cricketers and spectators.

In the late 1950s the Club found itself in dire straits financially and was in danger of folding, but the Club took the bull by the horns and embarked on a huge fundraising effort and in only four years had raised enough funds to build new dressing rooms and bar facilities alongside the old mission hut which over the years has gone through many



renovations. The Club then flourished both on and off the field so much so that the Cricket Team became League Champions of the CLL in 1962 and 1964.

By the late 1990s the old mission hut was really showing its age and with the Millennium looming

the Committee decided to demolish it and rebuild despite being turned down twice for grants by the National Lottery. A tremendous number of fund raising events took place and with a brewery loan, and help from local benefactors and local businesses, a superb new building emerged and despite a last minute hitch the "Millennium Suite"

opened in late 2000, ninety years after the original hut was moved from Moorside.

What a great investment this has proved to be for the Club. The new pavilion remains the centre of village life for the local community (alongside St Peter's Church) and has recently had a major face lift. It is environmentally friendly incorporating solar panels, air conditioning and a heat exchange system making it ready for the next ninety years or so - well who knows?

